

# EDP, EOP Series



UL Recognized  
CSA Certified  
VDE Approved

## EDP Series

The EDP series RFI filters provide enhanced differential mode performance for applications requiring more line-to-line protection. The EDP filters feature low leakage current for European safety requirements.

PC board mounted and only slightly taller than the EOP series filters, the EDP filters are available up to 10 amps.

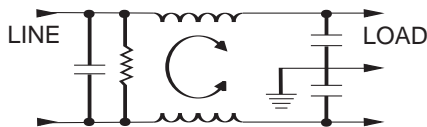
## EOP Series

The EOP series RFI power line filters are general purpose filters which are effective in removing both common and differential mode noise for susceptibility applications. These filters have low leakage current for European safety requirements.

The compact design allows PC board mounting with minimal space requirements. Available from 1 to 10 amps, the filters provide a cost effective alternative to on board components.

## Electrical Schematic

### EDP/EOP Models



Resistor location for reference only.



## Specifications

|   |          |
|---|----------|
| <b>Maximum leakage current, each line-to-ground</b> |          |
| @ 120 VAC 60 Hz:                                    | .22 mA   |
| @ 250 VAC 50 Hz:                                    | .38 mA   |
| <b>Hipot rating (one minute):</b>                   |          |
| line-to-ground                                      | 1500 VAC |
| line-to-line  | 1450 VDC |
| <b>Operating frequency:</b>                         | 50/60 Hz |
| <b>Rated voltage (max.):</b>                        | 250 VAC  |
| <b>Rated current:</b>                               |          |
| 1EDP/1EOP   | 1A       |
| 3EDP/3EOP   | 3A       |
| 6EDP/6EOP   | 6A       |
| 10EDP/10EOP   | 10A      |
| <b>Minimum insertion loss in dB:</b>                |          |
| Line-to-ground in 50 ohm circuit                    |          |

| Current Rating    | Frequency-MHz |    |    |    |    |    |
|-------------------|---------------|----|----|----|----|----|
|                   | .15           | .5 | 1  | 5  | 10 | 30 |
| <b>EDP Models</b> |               |    |    |    |    |    |
| 1A                | 32            | 41 | 54 | 54 | 46 | 40 |
| 3A                | 18            | 28 | 35 | 41 | 40 | 40 |
| 6A                | 10            | 20 | 28 | 37 | 40 | 40 |
| 10A               | 5             | 14 | 19 | 27 | 33 | 40 |
| <b>EOP Models</b> |               |    |    |    |    |    |
| 1A                | 32            | 41 | 54 | 54 | 46 | 40 |
| 3A                | 18            | 28 | 35 | 41 | 40 | 40 |
| 6A                | 10            | 20 | 28 | 37 | 40 | 40 |
| 10A               | 5             | 14 | 19 | 27 | 33 | 40 |

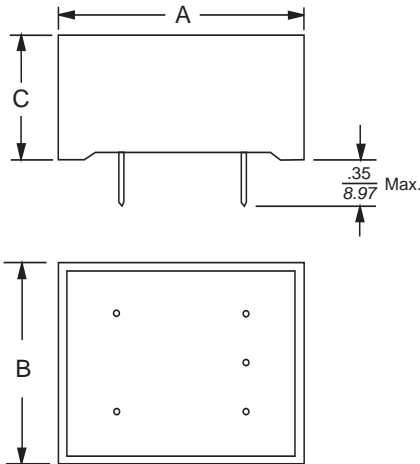
Line-to-line in 50 ohm circuit

| Current Rating    | Frequency-MHz |    |    |    |    |    |    |    |
|-------------------|---------------|----|----|----|----|----|----|----|
|                   | .15           | .5 | 1  | 2  | 4  | 10 | 20 | 30 |
| <b>EDP Models</b> |               |    |    |    |    |    |    |    |
| 1A                | 4             | 14 | 42 | 42 | 44 | 38 |    |    |
| 3A                | 4             | 14 | 24 | 38 | 38 | 38 |    |    |
| 6A                | 4             | 14 | 22 | 30 | 34 | 34 |    |    |
| 10A               | 6             | 16 | 22 | 40 | 50 | 45 |    |    |
| <b>EOP Models</b> |               |    |    |    |    |    |    |    |
| 1A                | 1             | 6  | 19 | 39 | 48 | 52 | 38 | 35 |
| 3A                | 1             | 4  | 9  | 9  | 28 | 41 | 36 | 35 |
| 6A                | 1             | 4  | 9  | 9  | 40 | 40 | 42 | 35 |
| 10A               | 1             | 4  | 9  | 9  | 14 | 35 | 42 | 35 |

# EDP, EOP Series

## Case Style

### EDP/EOP



Pins .025 square

## Case Dimensions

| Part No.   | A<br>(max)          | B<br>(max)          | C<br>(max)           |
|------------|---------------------|---------------------|----------------------|
| <b>EDP</b> | <b>1.44</b><br>36.6 | <b>1.24</b><br>31.5 | <b>0.95</b><br>24.15 |
| <b>EOP</b> | <b>1.44</b><br>36.6 | <b>1.24</b><br>31.5 | <b>0.78</b><br>19.9  |

## Part Numbers

|       |       |
|-------|-------|
| 1EDP  | 1EOP  |
| 3EDP  | 3EOP  |
| 6EDP  | 6EOP  |
| 10EDP | 10EOP |

## Mounting Holes Pattern & Clearance

